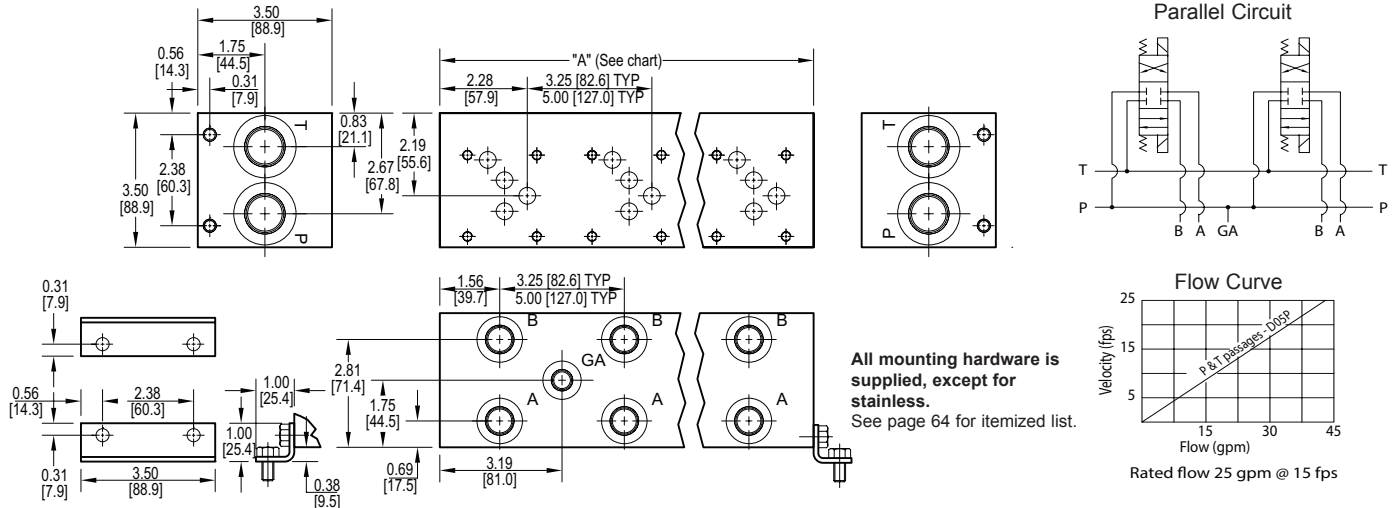


# NG10 Standard Flow Parallel Manifold



All mounting hardware is supplied, except for stainless.  
See page 64 for itemized list.

No. of stations	* 01	02	03	04	05	06	07	08	09	10	11	12	13	14	15	16	17	18	19	20	21	
"A" length (code 3 spa.) inch [mm]	3.25 [82.6]	6.50 [165.1]	9.75 [247.7]	13.00 [330.2]	16.25 [412.8]	19.50 [495.3]	22.75 [577.9]	26.00 [660.4]	29.25 [743.0]	32.50 [825.5]	35.75 [908.1]	39.00 [990.6]	42.25 [1073.2]	45.50 [1155.7]	48.75 [1238.3]	52.00 [1320.8]	55.25 [1403.4]	58.50 [1485.9]	61.75 [1568.5]	65.00 [1651.0]	68.25 [1733.6]	
apx. weight alum lb [kg]	4 [2]	8 [4]	11 [5]	14 [7]	17 [8]	21 [10]	24 [11]	27 [12]	30 [14]	34 [15]	37 [17]	41 [19]	44 [20]	47 [21]	51 [23]	55 [25]	58 [26]	61 [28]	64 [29]	67 [30]	71 [32]	
apx. weight ferrous lb [kg]	9 [4]	17 [8]	26 [12]	34 [15]	43 [20]	51 [23]	60 [27]	68 [31]	77 [35]	85 [39]	94 [43]	102 [46]	111 [50]	--	--	--	--	--	--	--	--	
"A" length (code 5 spa.) inch [mm]	--	8.25 [209.6]	13.25 [336.6]	18.25 [463.6]	23.25 [590.6]	28.25 [717.6]	33.25 [844.6]	38.25 [971.6]	43.25 [1098.6]	48.25 [1225.6]	53.25 [1352.6]	58.25 [1479.6]	63.25 [1606.6]	68.25 [1733.6]								
apx. weight alum lb [kg]	--	9 [4]	15 [7]	20 [9]	25 [11]	30 [14]	35 [16]	41 [19]	46 [21]	50 [23]	55 [25]	60 [27]	65 [29]	71 [32]								
apx. weight ferrous lb [kg]	--	22 [10]	36 [16]	49 [22]	62 [28]	76 [34]	89 [40]	102 [46]	116 [53]	--	--	--	--	--								
																Port code	Valve mtg.	Manifold mtg.				
																P, S	0.25-20 UNC x 0.75 [19] DP	0.31-18 UNC x 0.44 [11.1] DP				
																B, M, T	M6 ISO 6H x 0.75 [19] DP	M8 ISO 6H x 0.44 [11.1] DP				

\* Length of 01 station with relief cavity is 4.50 [114.3]. Gauge port not available on 01 station.

Specifications, descriptions, and dimensional data are subject to correction or change without notice or incurring obligation. Download latest catalog page revisions at [www.daman.com](http://www.daman.com).

## Ordering Information

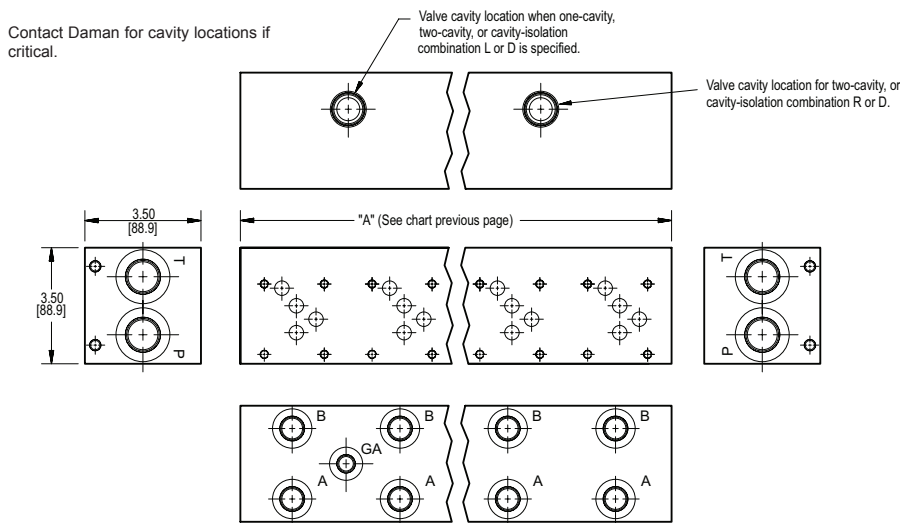
For **coating options** see pages 245-246.

Material	Valve Pattern	Circuit	No. of Stations	Valve Spacing	Port Threads	Options																																																																																	
<table border="1"> <thead> <tr> <th colspan="2">Material</th> </tr> </thead> <tbody> <tr> <td><b>A</b></td> <td>Aluminum - 6061-T6 3000† psi • 20.7 MPa</td> </tr> <tr> <td><b>D</b></td> <td>Ductile Iron - D4512 5000† psi • 34.5 MPa</td> </tr> <tr> <td><b>S*</b></td> <td>Stainless Steel - 17-4 5000† psi • 34.5 MPa</td> </tr> <tr> <td colspan="2">† Working pressure should be considered in accordance with ISO 4413 to determine appropriate material type.</td> </tr> </tbody> </table>	Material		<b>A</b>	Aluminum - 6061-T6 3000† psi • 20.7 MPa	<b>D</b>	Ductile Iron - D4512 5000† psi • 34.5 MPa	<b>S*</b>	Stainless Steel - 17-4 5000† psi • 34.5 MPa	† Working pressure should be considered in accordance with ISO 4413 to determine appropriate material type.		<table border="1"> <thead> <tr> <th colspan="2">Valve Pattern</th> </tr> </thead> <tbody> <tr> <td><b>D05</b></td> <td>ISO 4401-05-04 NFPA T3.5.1-D05 See Tech Information</td> </tr> </tbody> </table>	Valve Pattern		<b>D05</b>	ISO 4401-05-04 NFPA T3.5.1-D05 See Tech Information	<table border="1"> <thead> <tr> <th colspan="2">Circuit</th> </tr> </thead> <tbody> <tr> <td><b>P</b></td> <td>Parallel Circuit Standard Flow</td> </tr> </tbody> </table>	Circuit		<b>P</b>	Parallel Circuit Standard Flow	<table border="1"> <thead> <tr> <th colspan="2">No. of Stations</th> </tr> </thead> <tbody> <tr> <td colspan="2">Aluminum</td> </tr> <tr> <td><b>01...21</b></td> <td>Available with spacing code 3</td> </tr> <tr> <td><b>02...14</b></td> <td>Available with spacing code 5</td> </tr> <tr> <td colspan="2">Ductile Iron</td> </tr> <tr> <td><b>01...12</b></td> <td>Available with spacing code 3</td> </tr> <tr> <td><b>02...09</b></td> <td>Available with spacing code 5</td> </tr> <tr> <td colspan="2">Stainless Steel</td> </tr> <tr> <td><b>01...06</b></td> <td>Available with spacing code 3</td> </tr> <tr> <td><b>02...04</b></td> <td>Available with spacing code 5</td> </tr> </tbody> </table>	No. of Stations		Aluminum		<b>01...21</b>	Available with spacing code 3	<b>02...14</b>	Available with spacing code 5	Ductile Iron		<b>01...12</b>	Available with spacing code 3	<b>02...09</b>	Available with spacing code 5	Stainless Steel		<b>01...06</b>	Available with spacing code 3	<b>02...04</b>	Available with spacing code 5	<table border="1"> <thead> <tr> <th colspan="2">Valve Spacing</th> </tr> </thead> <tbody> <tr> <td><b>3</b></td> <td>3.25 inch 82.6 mm</td> </tr> <tr> <td><b>5</b></td> <td>5.00 inch 127.0 mm</td> </tr> </tbody> </table>	Valve Spacing		<b>3</b>	3.25 inch 82.6 mm	<b>5</b>	5.00 inch 127.0 mm	<table border="1"> <thead> <tr> <th colspan="4">Port Threads</th> </tr> </thead> <tbody> <tr> <th>P*</th> <th>P &amp; T</th> <th>A &amp; B</th> <th>GA</th> </tr> <tr> <td><b>S</b></td> <td>NPTF • ANSI B1.20.3</td> <td>0.75</td> <td>0.50</td> <td>0.25</td> </tr> <tr> <td><b>B</b></td> <td>SAE • ISO 11926</td> <td>-12</td> <td>-8</td> <td>-6</td> </tr> <tr> <td><b>M</b></td> <td>BSPP • ISO 1179</td> <td>0.75</td> <td>0.50</td> <td>none</td> </tr> <tr> <td><b>T*</b></td> <td>ISO • ISO 6149</td> <td>M27</td> <td>M18</td> <td>none</td> </tr> <tr> <td><b>T*</b></td> <td>BSPT • ISO 7</td> <td>0.75</td> <td>0.50</td> <td>none</td> </tr> </tbody> </table>	Port Threads				P*	P & T	A & B	GA	<b>S</b>	NPTF • ANSI B1.20.3	0.75	0.50	0.25	<b>B</b>	SAE • ISO 11926	-12	-8	-6	<b>M</b>	BSPP • ISO 1179	0.75	0.50	none	<b>T*</b>	ISO • ISO 6149	M27	M18	none	<b>T*</b>	BSPT • ISO 7	0.75	0.50	none	<table border="1"> <thead> <tr> <th colspan="2">Options</th> </tr> </thead> <tbody> <tr> <td colspan="2">See next page for available options and ordering codes.</td> </tr> </tbody> </table>	Options		See next page for available options and ordering codes.	
Material																																																																																							
<b>A</b>	Aluminum - 6061-T6 3000† psi • 20.7 MPa																																																																																						
<b>D</b>	Ductile Iron - D4512 5000† psi • 34.5 MPa																																																																																						
<b>S*</b>	Stainless Steel - 17-4 5000† psi • 34.5 MPa																																																																																						
† Working pressure should be considered in accordance with ISO 4413 to determine appropriate material type.																																																																																							
Valve Pattern																																																																																							
<b>D05</b>	ISO 4401-05-04 NFPA T3.5.1-D05 See Tech Information																																																																																						
Circuit																																																																																							
<b>P</b>	Parallel Circuit Standard Flow																																																																																						
No. of Stations																																																																																							
Aluminum																																																																																							
<b>01...21</b>	Available with spacing code 3																																																																																						
<b>02...14</b>	Available with spacing code 5																																																																																						
Ductile Iron																																																																																							
<b>01...12</b>	Available with spacing code 3																																																																																						
<b>02...09</b>	Available with spacing code 5																																																																																						
Stainless Steel																																																																																							
<b>01...06</b>	Available with spacing code 3																																																																																						
<b>02...04</b>	Available with spacing code 5																																																																																						
Valve Spacing																																																																																							
<b>3</b>	3.25 inch 82.6 mm																																																																																						
<b>5</b>	5.00 inch 127.0 mm																																																																																						
Port Threads																																																																																							
P*	P & T	A & B	GA																																																																																				
<b>S</b>	NPTF • ANSI B1.20.3	0.75	0.50	0.25																																																																																			
<b>B</b>	SAE • ISO 11926	-12	-8	-6																																																																																			
<b>M</b>	BSPP • ISO 1179	0.75	0.50	none																																																																																			
<b>T*</b>	ISO • ISO 6149	M27	M18	none																																																																																			
<b>T*</b>	BSPT • ISO 7	0.75	0.50	none																																																																																			
Options																																																																																							
See next page for available options and ordering codes.																																																																																							

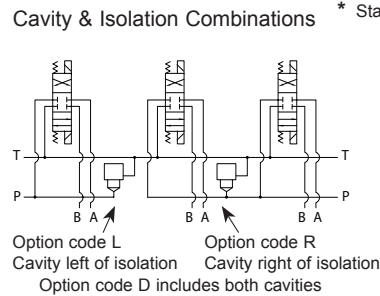
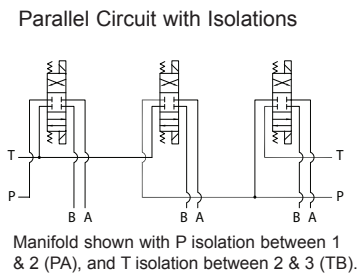
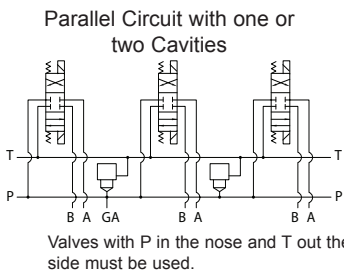
\*All stainless steel products are passivated.

\* Pipe ports in stainless can experience galling

# Options - NG10 Standard Flow Parallel Manifold



ISOLATIONS		
Daman isolation options allow a manifold to have two independent pressure and/or tank ports. Isolations are drilled rather than plugged to ensure a leakproof and failproof isolation.		
Ordering code letter:	* Isolation is between stations:	Available # of stations:
3.25 [82.6] spacing		
A	01 & 02	02-10
B	02 & 03	03-11
C	03 & 04	04-12
D	04 & 05	05-13
E	05 & 06	06-14
F	06 & 07	07-15
G	07 & 08	08-16
H	08 & 09	09-17
J	09 & 10	10-18
5.00 [127.0] spacing		
A	01 & 02	02-07
B	02 & 03	03-08
C	03 & 04	04-09
D	04 & 05	05-10
E	05 & 06	06-11
F	06 & 07	07-12



\* Stations are numbered left to right.

- NOTES:**
- The GA port is not available on a (1) station manifold.
  - The GA port is not available when a pressure isolation is located between stations 1 & 2.
  - Some cavity and isolation combinations are not possible with spacing code 2. Consult factory to determine availability.
  - For /C cavity option, see page 226.9 for relief valve assembly option.

## Ordering Information

